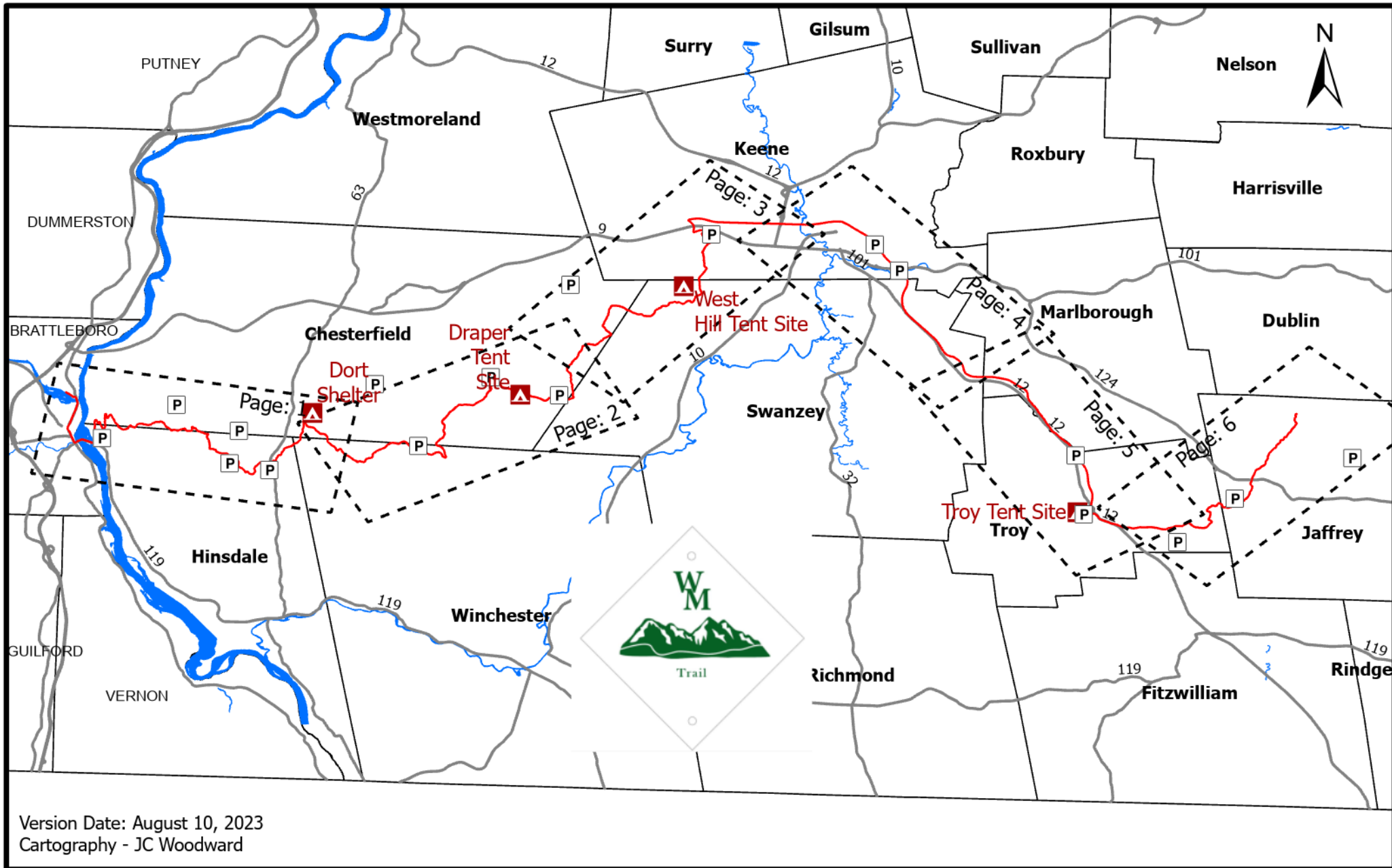


# Wantastiquet-Monadnock Trail Overview



A 45 mile hiking trail beginning at the Connecticut River, and ending at the top of Mt. Monadnock.



## **Wantastiquet Trail Map – Table of Contents**

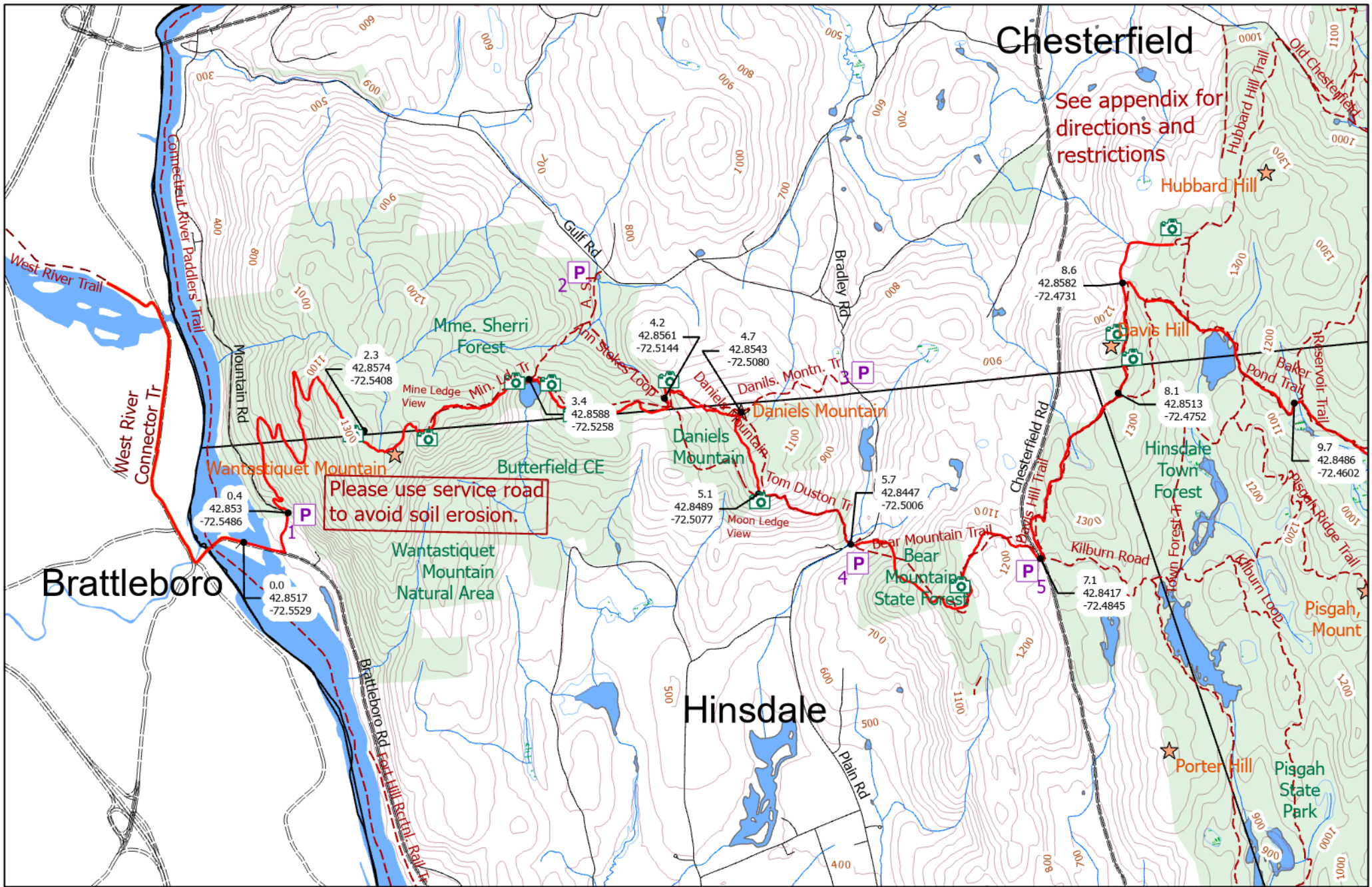
1. Sections Overview Map
2. Section Maps 1 – 6
3. Parking Locations Table
4. Trail Mileage Table
5. Camping Information
6. Coalition Member Organizations

## **History of the Wantastiquet-Monadnock Trail**

In the early 1990's the vision for a hiking trail from Mt. Wantastiquet on the Connecticut River to Mt. Monadnock evolved simultaneously with members of the Chesterfield Conservation Commission and the Friends of Pisgah Park. The idea for the western section was to combine a wildlife corridor and a hiking trail starting from Brattleboro, over Mt. Wantastiquet, and then to Pisgah Park along the ridge line between Chesterfield and Hinsdale. With the help of several individuals, local groups and land conservation activities, this section was completed in 2009. The eastern section between Pisgah and Monadnock took longer because of several trail possibilities. We finally settled on going through the Horatio Colony Preserve on West Hill in Keene. Using the bike path and then the rail line to meet the Metacomet-Monadnock Trail in Troy center. This we would follow to the top of Monadnock. This took until 2012 and, as with the western section, was the result of the combined hard work of many individuals and groups.

Linking the two sections and doing all the required trail building and signage took several more years. In 2018, we did a formal opening of the entire 47.5 mile trail and invited people to hike the entire trail in a series of nine section hikes.

Through the years the name and members of a group of organizations involved with creating and managing the trail has changed many times. It has now evolved into the Wantastiquet-Monadnock Trail Coalition with members listed on the last page. We are dedicated to maintaining this trail so it can remain a wonderful treasure for the entire Monadnock region.



# Wantastiquet-Monadnock Trail Map

## Map Section 1

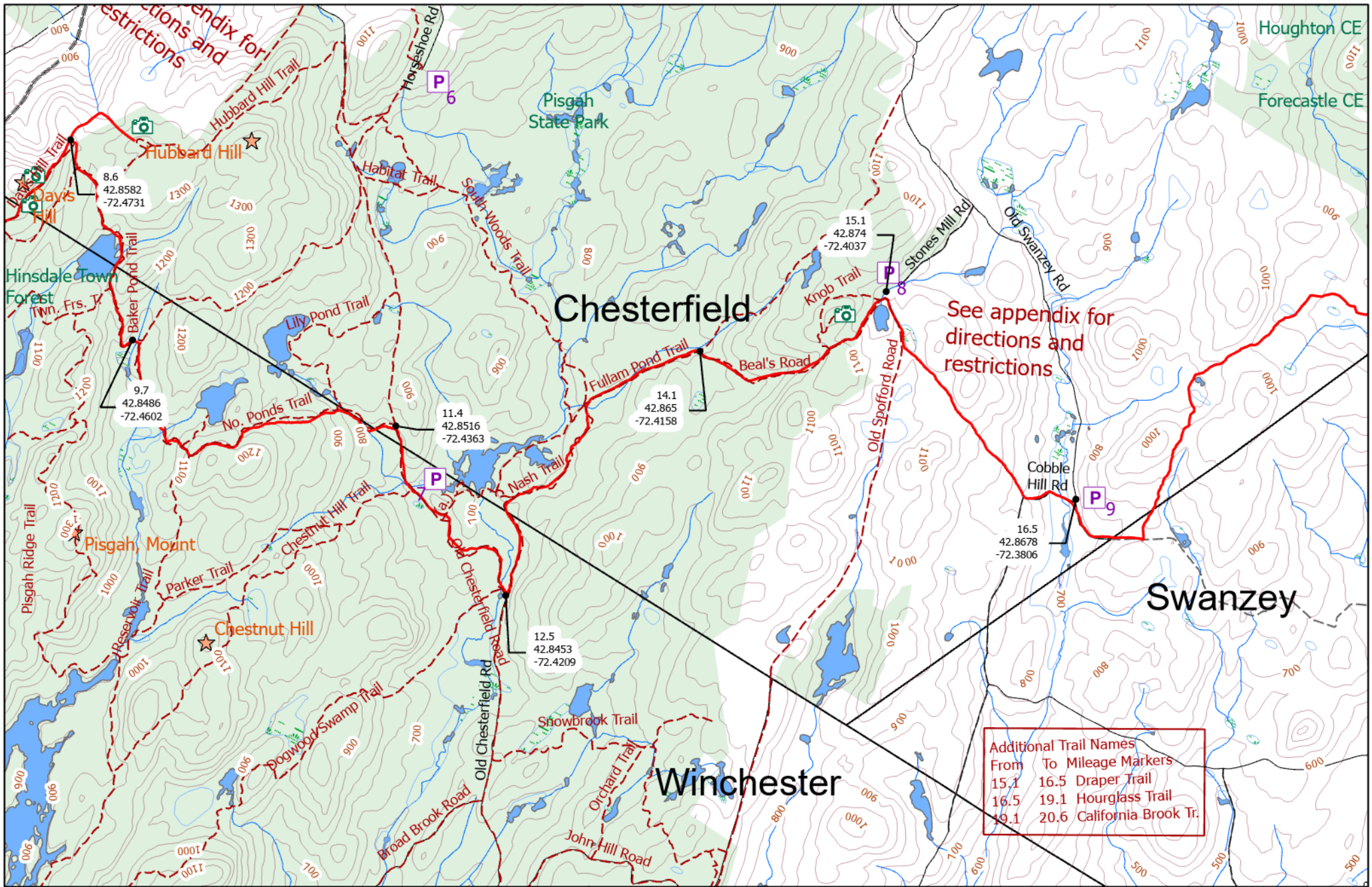


0 0.5 1 Miles



- Parking
- Conserved Lands
- Roads Dissolved
- Views
- NH Trails





# Wantastiquet-Monadnock Trail Map

## Map Section 2

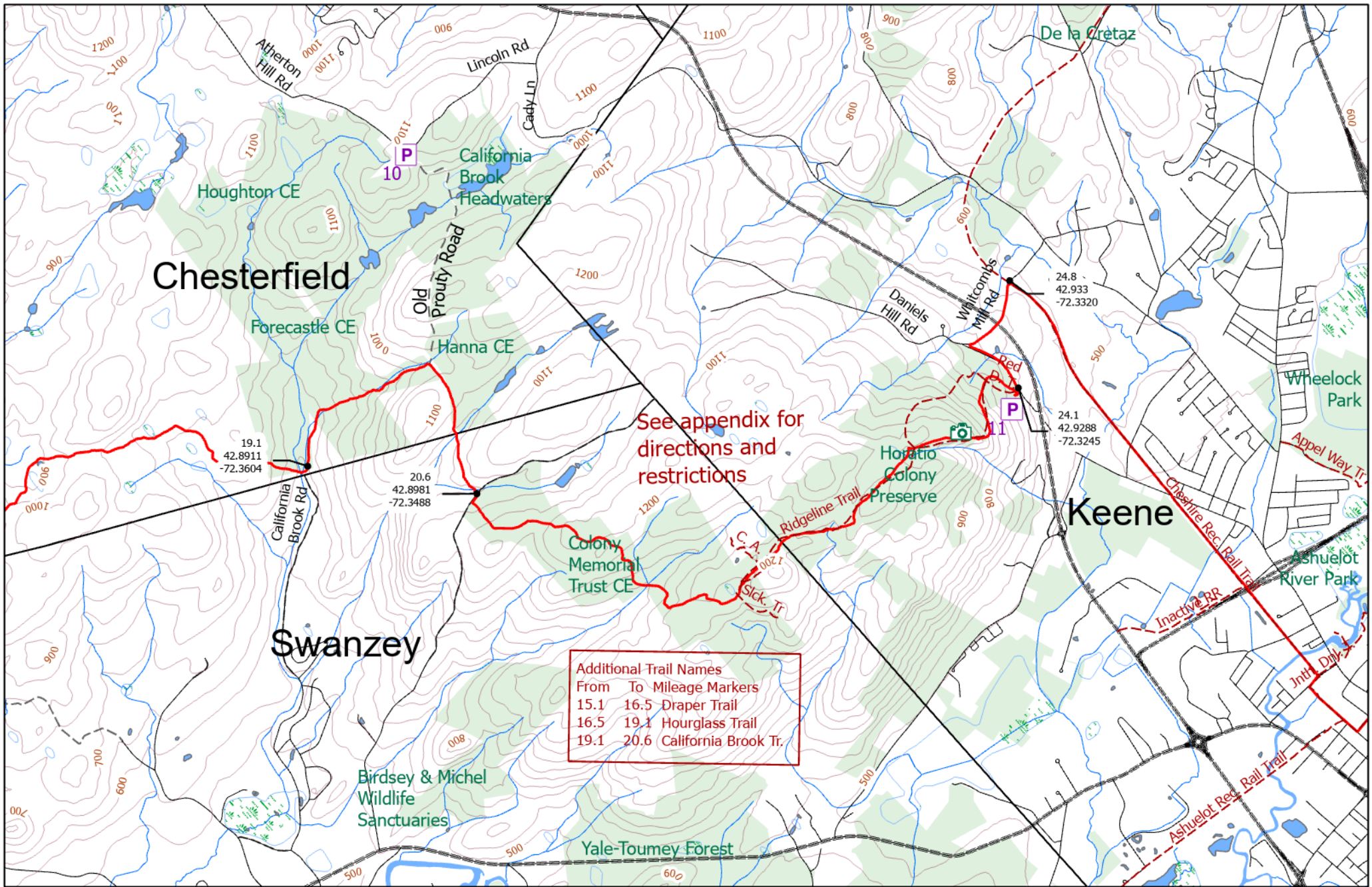


0 0.5 1 Miles



- Parking
- Conserved Lands
- Roads Dissolved
- Views
- NH Trails





# Wantastiquet-Monadnock Trail Map

## Map Section 3

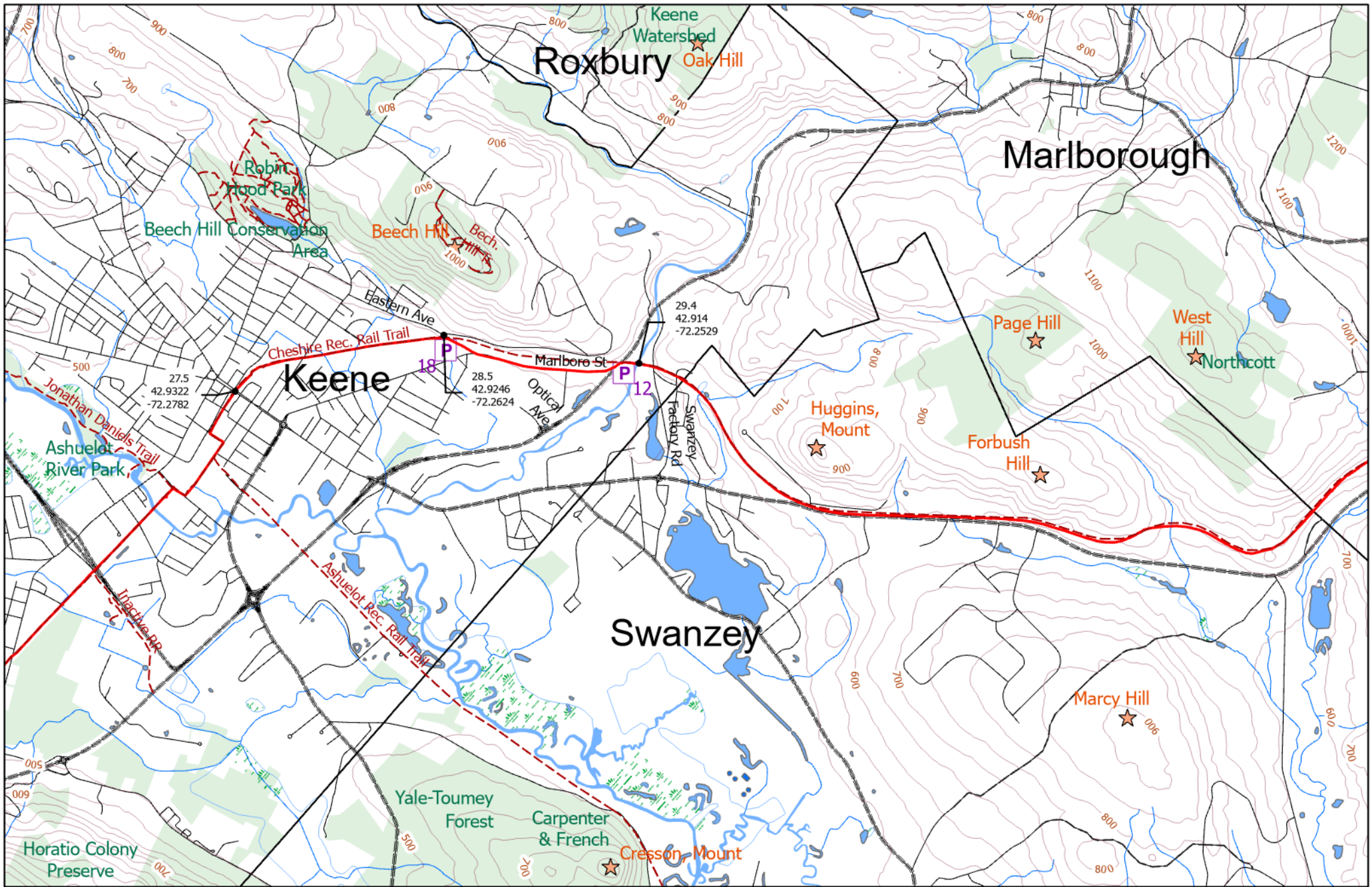


0 0.5 1 Miles



- Parking
- Conserved Lands
- Roads Dissolved
- Views
- NH Trails





# Wantastiquet-Monadnock Trail Map

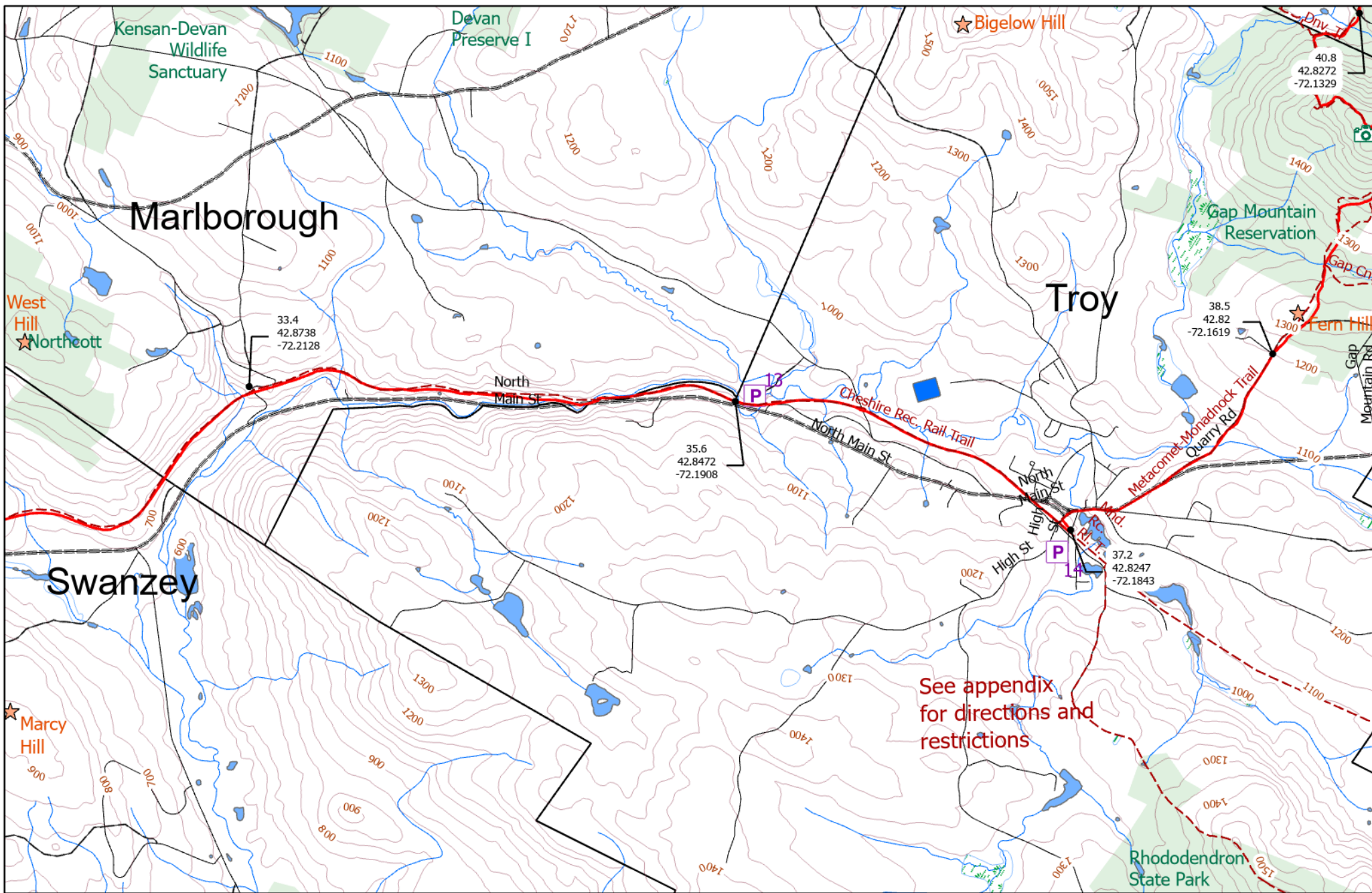
Map Section 4

0 0.5 1 Miles



- Parking
- Conserved Lands
- Roads Dissolved
- Views
- NH Trails





# Wantastiquet-Monadnock Trail Map

## Map Section 5

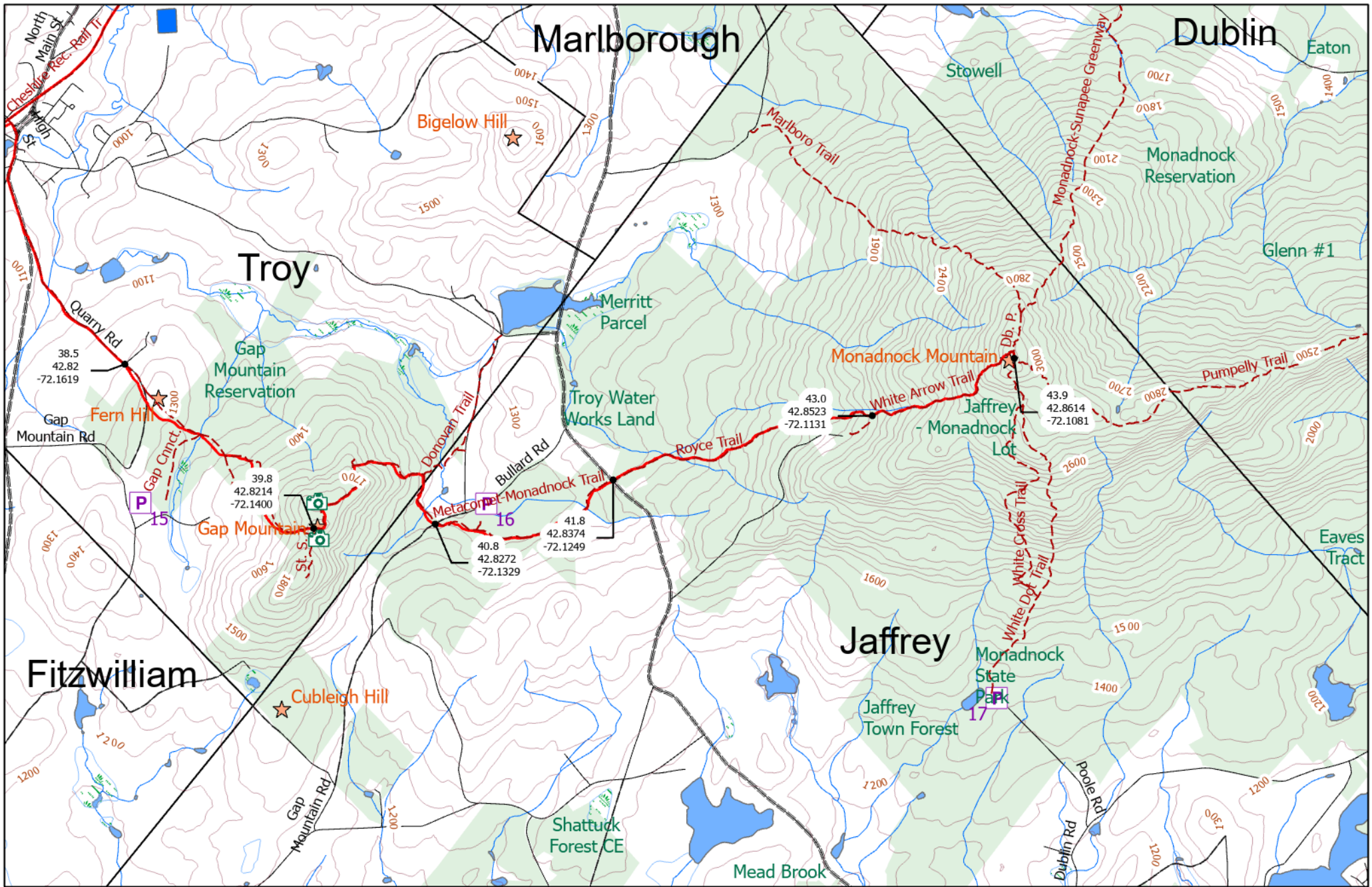


0 0.5 1 Miles



- P Parking
- Conserved Lands
- Roads Dissolved
- Views
- NH Trails





# Wantastiquet-Monadnock Trail Map

Map Section 6

0 0.5 1 Miles



- Parking
- Conserved Lands
- Roads Dissolved
- Views
- NH Trails



Lat	Lon	Mileage E to W	Mileage W to E	Description
42.851673	-72.552858	0.0	43.9	Start on island
42.853037	-72.548585	0.4	43.5	Please stay on access road
42.857390	-72.540765	2.3	41.5	Boulder View
42.858793	-72.525783	3.4	40.5	Jcn Mine Ledge / Ann Stokes Loop
42.856066	-72.514399	4.2	39.7	Jcn Stokes/Daniel Mtn
42.854309	-72.507991	4.7	39.2	Daniels Mtn Summit
42.848942	-72.507734	5.1	38.8	Moon Ledge
42.844712	-72.500564	5.7	38.2	Cross Plain Rd
42.841667	-72.484457	7.1	36.8	Route 63 / Chesterfield Rd
42.851268	-72.475215	8.1	35.8	Keep left to Davis Hill Tr
42.858200	-72.473136	8.6	35.3	Jcn Dort Shelter Spur
42.848647	-72.460195	9.7	34.2	Jcn Baker Pond/Reservoir Tr
42.851637	-72.436290	11.4	32.5	Jcn No. Ponds Tr / Old Chesterfield Rd
42.845257	-72.420885	12.5	31.4	Jcn Old Chesterfield / Nash Rd
42.864994	-72.415759	14.1	29.7	Jcn Fullam Pond / Beals Rd
42.873974	-72.403750	15.1	28.7	Beals Rd Parking
42.867810	-72.380598	16.5	27.4	Jcn Hines Meadow Rd / Old Swanzey Rd
42.891120	-72.360388	19.1	24.8	California Brook Rd
42.898134	-72.348809	20.6	23.3	West Hill Rd
42.898134	-72.348809	24.1	19.7	Daniels Hill Rd
42.928831	-72.324472	24.8	19.1	Cheshire Rail Trail
42.932969	-72.332033	27.5	16.3	Cross Main St Keene
42.932250	-72.278208	28.5	15.3	Eastern Ave
42.924576	-72.262399	29.4	14.4	Historic Stone Arch Bridge
42.913974	-72.252906	33.4	10.5	Webb Depot Rd
42.873809	-72.212754	35.6	8.3	Route 12 Parking
42.847184	-72.190790	37.2	6.6	Troy RR Depot, Troy Tent Site Spur, Jcn M-M Tr
42.824702	-72.184275	38.5	5.4	Jcn Quarry Rd / M-M Tr
42.819994	-72.161860	39.8	4.1	Gap Mountain Summit
42.821376	-72.140038	40.8	3.0	Bullard Rd Parking
42.827195	-72.132923	41.8	2.1	Mountain Rd / Route 124
42.837401	-72.124867	43.0	0.8	White Arrow Tr
42.852271	-72.113128	43.9	0.0	Mount Monadnock Summit

<b>Parking</b>	<b>Lat</b>	<b>Lon</b>	<b>Description</b>
1	42.8527	-72.5472	Mountain Road
2	42.8650	-72.5199	Gulf Rd
3	42.8554	-72.4969	N. Hinsdale Rd – Limited space, Closed in winter
4	42.8434	-72.5003	Plain Rd – Limited space, Only from south in winter
5	42.8410	-72.4858	Route 63
6	42.8725	-72.4470	Horseshoe Rd
7	42.8498	-72.4311	Old Chesterfield Road
8	42.8751	-72.4044	Stones Mill Rd – Limited space
9	42.8684	-72.3792	Old Swanzey Rd – Limited space
10	42.9091	-72.3752	Lincoln Rd – Limited space
11	42.9264	-72.3307	Daniels Hill Rd
12	42.9143	-72.2544	Swanzey Factory Road
13	42.8463	-72.1895	Route 12
14	42.8247	-72.1865	Troy Depot
15	42.8145	-72.1522	Gap Mountain Rd
16	42.8269	-72.1324	Bullard Rd
17	42.8453	-72.0878	Poole Rd / State Park
18	42.9234	-72.2629	Marlboro Street

**Note: GPS coordinates are approximate**



# Wantastiquet Trail Camping Information

## Dort Shelter

Heading west, at mile marker 8.6 take a left on the Shelter Spur Trail and follow the signs about 1/4 mile downhill.

Heading east, bear right on the Hubbard Hill Trail, go left to the view site and follow the sign to the left going downhill from the viewsite.

Fires allowed in fire pit.

## Draper Tent Site

Heading west, look for a sign on the right about 3/4 mile past the Beals Trailhead. If you pass a cemetery on the left you have gone too far!

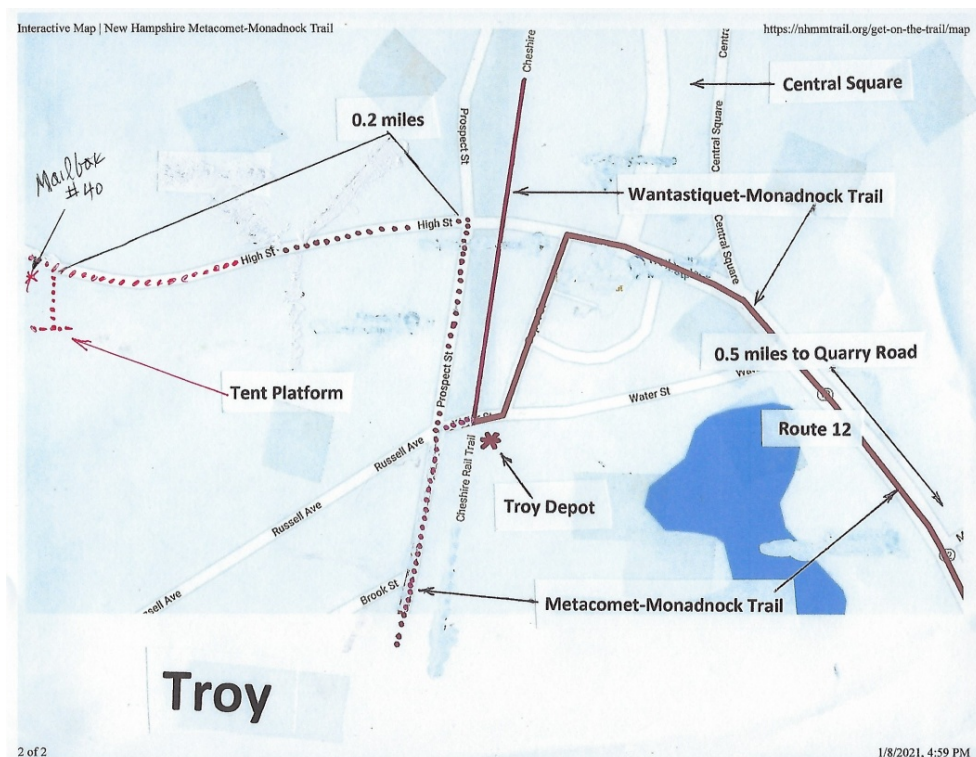
Heading east, look for the cemetery on your right near the end of a long mostly uphill and then look for the tent sign on your left.

No fires.

## Troy Tent Site

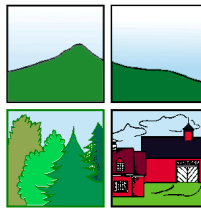
See map below. Please be respectful of homeowner's wishes:

- 1 night stay per group 2 nights with permission from land owner.
- Dogs should be leashed at all times.
- Carry in carry out site, try and leave the site cleaner than you found it.
- Facilities are of mouldering privy design. Follow instructions under roof lid.
- Fires allowed within designated fire ring(s). Do not move rings. (Noted on signs)
- 3 separate sites. Sites 1 and 2 have platforms
- Year-round natural water source (Thayer brook) at site 1



## Coalition Members

Antioch University New England  
 Appalachian Mountain Club  
 Chesterfield Conservation Commission  
 City of Keene  
 Colony Memorial Trust  
 Friends of Pisgah State Park  
 Monadnock Conservancy  
 New Hampshire State Parks  
 Pathways for Keene  
 Society for the Protection of NH Forests  
 Southwest Region Planning Commission  
 Swanzey Conservation Commission  
 Swanzey Rail Trail Advisory Committee



VIBRANT • ACTIVE • COMMUNITY  
PATHWAYSFORKEENE.ORG

